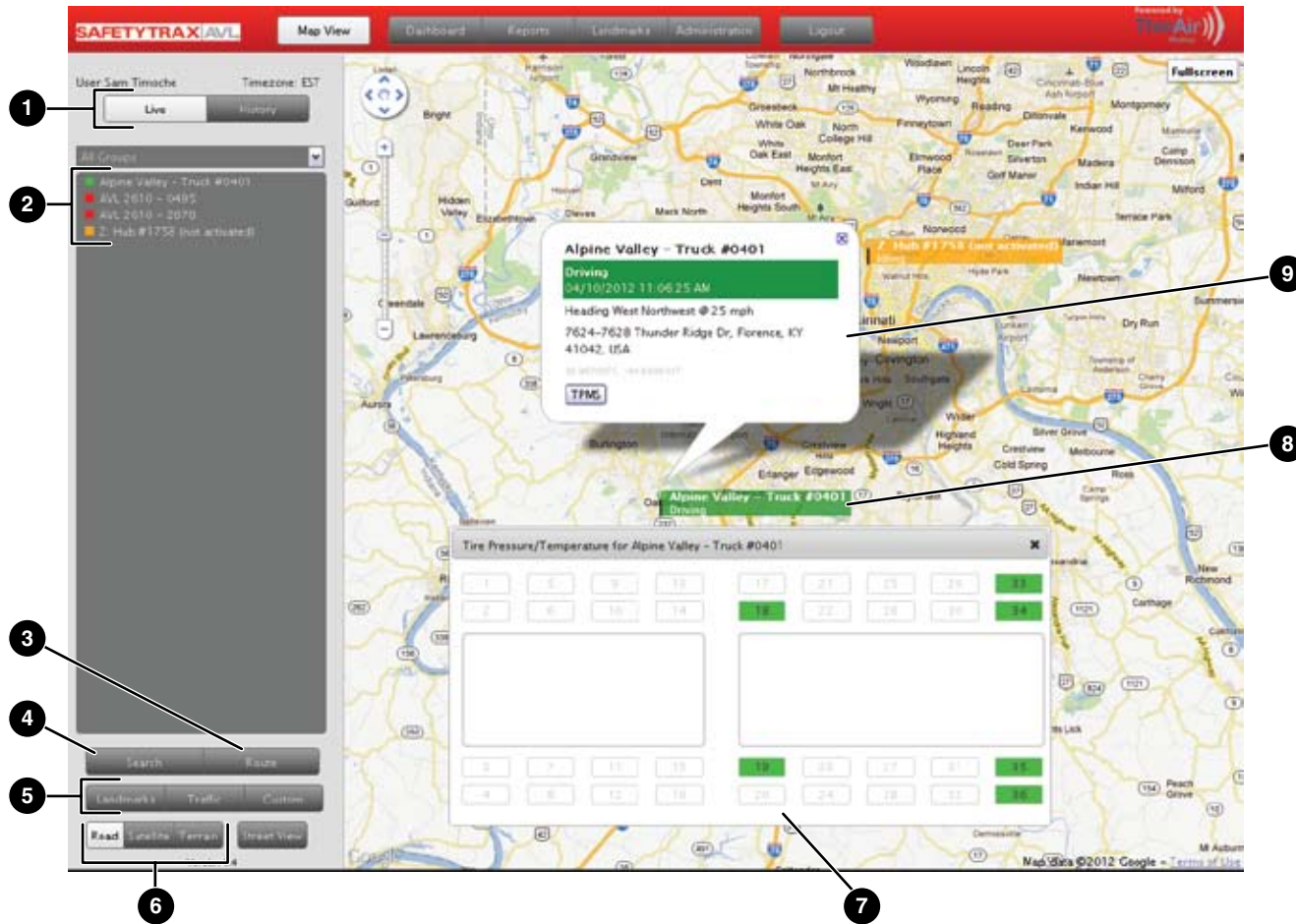


GETTING STARTED WITH SAFETYTRAX AVL



1 - Views - Select Live to view your vehicle's locations in real time. Select History to display your vehicle's past actions.

2 - Vehicle List - Click on a vehicle to display its position and details instantly. In the History view, first use the calendar to select a date, then select a vehicle from the list to display its movement that day.

3 - Route - Click to display the Route window. Click on at least two locations on the map, then click Route to automatically display available routes. Click Reset to map another route.

4 - Search - Click to display the Search window. Enter an address and click Search to display it on the map.

5 - Overlays - Select Landmarks, Traffic, or Custom to overlay information on the map in real time. Ask your administrator about available custom overlays.

6 - Map Controls - Select Road, Satellite, or Terrain.

7 - TPMS Display - The Tire Pressure Monitoring System displays the pressure status of each equipped tire.

8 - Vehicle Position - The vehicle's current position and status. Click on it to display the Vehicle Details window.

9 - Vehicle Details - Displays the vehicle's current status, heading, nearest estimated address, and GPS coordinates. Click TPMS to display the TPMS Display.

Dashboard



The Dashboard screen allows you to view fleet-wide statistics such as engine idling, speeding, stops, distance travelled, and more with intuitive color-coded graphs. Dashboards can be selected for individual vehicles, groups of vehicles, or the entire fleet.

Reports



The Reports screen allows you to run more than a dozen reports on individual vehicles, groups of vehicles, or the entire fleet. Each report can be customized by time and date criteria and exported in a variety of formats including PDF and Excel.



Mobile video solutions for enhanced safety