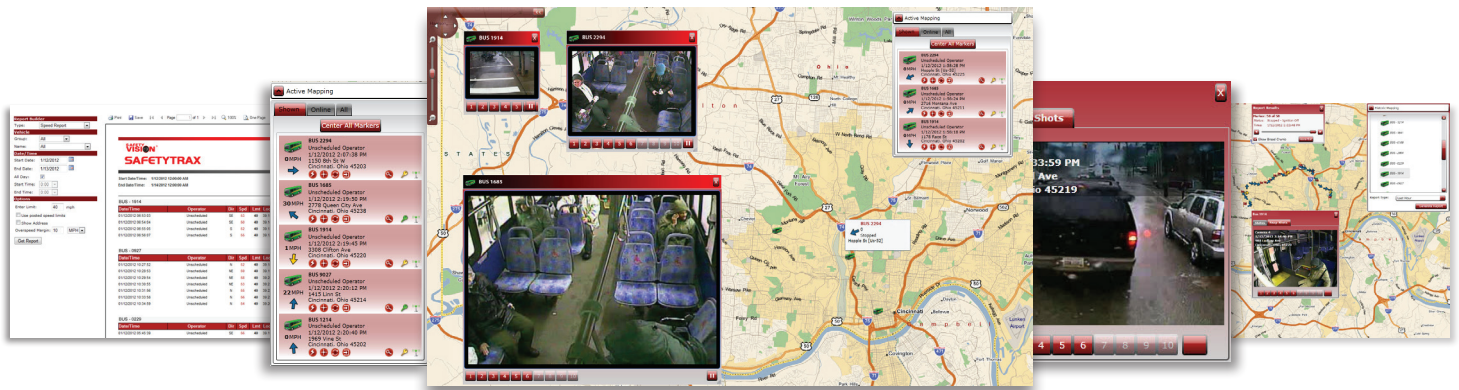


LIVETRAX

WEB BASED VIDEO STREAMING AND FLEET TRACKING SOLUTION

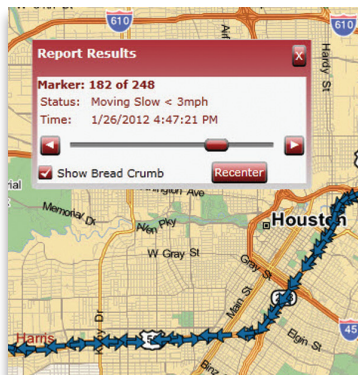


LiveTrax is a powerful, web based, live video streaming and fleet tracking service designed for Safety Vision DVRs. LiveTrax utilizes cellular networks to stream video on-demand to authorized users via simple browser interface. LiveTrax is architected with scalability in mind to support any sized fleet with simultaneous streaming from multiple vehicles, real time fleet tracking, intuitive historical mapping, reporting and more in one simple service.



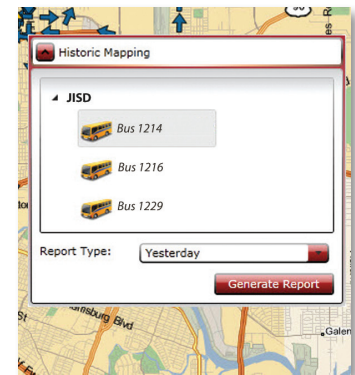
SNAPSHOTS

Users can view vehicle status, address and JPEG snapshots from any of the vehicle cameras for each breadcrumb in historical mapping report.



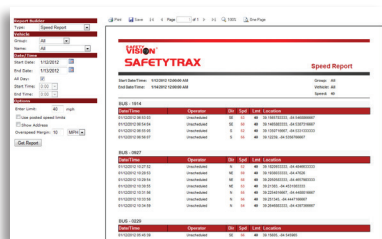
BREADCRUMB TRAIL

Each update in a historical mapping report is marked with arrows showing the bearing of the vehicle. Color coded breadcrumb arrows highlight events, idling, status and more for simple visual access. The entire route can be scrolled through with the built-in slider bar with time, date and status clearly displayed.



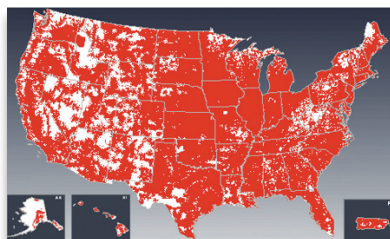
REPORT GENERATOR

Creating a historical report is as easy as selecting the vehicle and time frame. Custom dates are configurable to view vehicle breadcrumb trails over an extended period of time. Results are displayed with arrows showing bearing and status as well as optional JPEG snapshots and DVR health status.



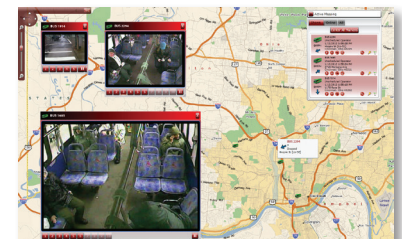
REPORTS

LiveTrax comes standard with multiple reports including speed, stop, daily summary and more. Reports can be run for one, some or all vehicles in a fleet with customizable time frames and parameters. In addition, health check status of DVRs can be displayed in real time.



SUPERIOR NATIONWIDE COVERAGE

LiveTrax data plans provide superior 3G coverage nationwide for fast updates and low latency connectivity for live look-in video streaming. The powerful mapping engine with spatial relational database enables high query counts and supports reverse geocoding and real time address lookup to provide greater context for vehicle tracking.



MULTI-VEHICLE VIDEO STREAMING

LiveTrax supports live video streaming from multiple vehicles simultaneously. Multiple users can access the same vehicle and all video windows are resizable to accommodate single, dual or multi-display environments.

